

The Manchester Citizen



YOUR OFFICIAL TOWNSHIP RESOURCE

FROM THE MAYOR'S OFFICE

Dear Neighbors,

As the seasons change, I want to share some exciting updates and extend my best wishes for the months ahead. This edition of the Manchester Citizen is packed with essential information, including details on upcoming holiday events, safety reminders, and service updates from our dedicated Township departments.

Our team has worked hard to ensure Manchester remains a vibrant, safe, and connected community. We have expanded service offerings at 82 Lacey Road. In addition to our Senior Outreach presence on the west side of town, we have partnered with Ocean County Veterans Services and Ocean County Connection to open satellite offices, increasing access to vital resources for our community's many veterans, seniors, and residents in Whiting.

Looking ahead, I invite you to join us for our seasonal events—excellent opportunities to gather with the family, celebrate, and enjoy the warmth of our community. This issue also includes tips to keep your home and family safe during the winter months and helpful contact information for our departments, from public works to emergency services.

As always, my office is here to serve you. If you have any questions, please don't hesitate to contact my office at (732)657-8121 x3105 or email at Mayor@ManchesterTwp.com. Thank you for your continued support, and may this season be filled with joy and connection.

Warm regards,
Robert Arace
Mayor of Manchester Township

Inside This Issue

- Who's Who in Town Hall 2
- Other Agencies.....2
- From the Clerks Office.....3
- 9th Legislature Update..... 5-7
- Code Enforcement.....8
- The Department of Inspections, Land Use & Planning 8
- Street Trees vs Private Trees.. 10
- Christmas in the Pines.....11
- Township Reassessment 12
- Manchester Police Dept 13
- Manchester Recreation15
- Dept of Public Works 16-22



MANCHESTER TOWNSHIP, NJ

1 COLONIAL DRIVE, MANCHESTER, NJ 08759 • 732-657-8121 • www.ManchesterTwp.com

WHO'S WHO IN TOWN HALL

Mayor , ext. 3105	Robert S. Arace	Tax Assessor , ext. 3802	Martin Lynch
Council , ext. 3203	Roxanne Conniff	Inspection, Land Use & Planning , ext. 3919	Gary Sylvester, Director
Council , ext. 3203	James Vaccaro	Construction Official , ext. 3902	Michael Martin
Council , ext. 3203	Craig Wallis	Chief of Police , ext. 4100	Antonio Ellis
Council , ext. 3203	Joseph Hankins	Emergency Management , ext. 4901	Robert Sharry
Council , ext. 3203	Michele Zolezi	Senior & Social Services , ext. 5001	Melissa DePalma
Business Administrator , ext. 3105	Carl Block	Municipal Court Judge , ext. 3407	Daniel Sahin
Public Works and Utilities , ext. 3300	Albert Yodakis, Director	Municipal Court Administrator , ext. 3405	Tracy Barcus
Recreation , ext. 5102	Tracey Lynch, Director	Personnel Division , ext. 3010	Tamara Goble
Finance , ext. 3600	Diane Lapp, Director	Purchasing Division , ext. 3500	Sean Canning
Clerk/Registrar , ext. 3200	Teri Giercyk		
Tax Collector , ext. 3700	Andrea Gaskill		

OTHER AGENCIES

Emergency Police/Fire /Ambulance.....	911	County Clerk	732-929-2018
Non -Emergency call	732-657-6111	Salvation Army.....	732-270-8393
Deborah Hospital.....	609-6611	Consumer Affairs Department.....	732-929-2105
Ocean University Medical Ct (Brick)	732-840-2200	Catholic Charities	732-350-4120
Community Medical Ct.....	800-266-2278	Rental Assistance Program	732-55-0818
Dial-A-Ride.....	732-350-2900	Nursing Home Complaint Hotline	800-792-9770
Ocean Ride.....	732-736-8989	Lifeline Utility Bill Support.....	800-633-4227
Manchester Senior Outreach Transportation	732-849-8305	PADD.....	800-792-9745
Ocean County Veterans Reservation Ride.....	732-929-2096		
Comcast Cable (Xfinity).....	800-266-2278		
Social Security Administration	800-772-1213		
Ocean County Surrogate Court.....	732-929-2011		
County Connection (ocean county mall)	732-288-7777		
Ocean county Senior Services.....	732-929-2091		
Ocean County Meals on Wheels	848-228-9900		
Manchester Senior Outreach	732-849-8305		
JCP&L	800-662-3115		
N.J Natural GasCo. 609-221-0051/Gas Leaks:.....	800-427-5325		
Manchester Town Hall.....	732-657-8121		
Manchester water/Sewer	732-914-1200		
Manchester Recreation.....	732-657-8121 ext 5102		
Ocean County Library (main branch).....	732-349-6200		
Manchester Branch (ocean county Library).....	732-657-7600		
Manchester Animal Control	732-657-8121 ext 4606		
Recycling	732-657-8121 ext 330		
Manchester Tax Assessor	732-657-8121 ext 3802		
Manchester/Lakehurst Post Office.....	732-657-8562		
Whiting Post Office.....	732-350-5817		
Toms River Post Office	732-349-0710		
Ocean County Board of Elections.....	732-929-2167		
Veteran Services	732-929-2096		
Emergency Managemen.....	732-657-8121 ext 4901		
Poison control.....	800-222-1222		
NJ DMV.....	609-2926500		
Construction Official.....	732-657-8121 ext 3919		
Ocean County Sheriff.....	732-929-2044		

N.J. STATE 9TH DISTRICT LEGISLATIVE OFFICE

609-693-6700

Senator Carmen F Amato, senamato@njleg.org

Assembly Brian E. Rumpf

Assemblyman Greg E. Myhre, assemblyman@njleg.org

FEDERAL REPRESENTATIVES

Congressman Christopher Smith.....732-504-0562

OCEAN COUNTY COMMISSIONERS

732-929-2005

Washington Street, Admin. Building
P.O. Box 2191, Toms River, NJ 08754

Commissioner Bobbi Jo Crea

Commissioner Gary Quinn

Commissioner Frank sadegi

Commissioner Virginia Haines

Commissioner John Kelly

From The Clerk's Office



"No Knock Registry"

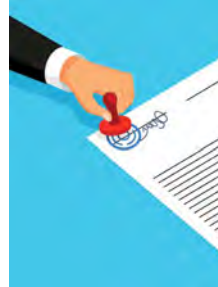
Residents who no longer wish to receive door-to-door visits from vendors are invited to sign up for Manchester Township's "No Knock Registry". The registry permits all residents to register with the Township Clerk indicating that they do not want hawkers, peddlers, solicitors or canvassers to approach their homes and/or seek contact with the occupants of the registered home.

Once registered, the Clerk's Office will provide a self-adhering sticker, free of charge, if picked up at the Clerk's Office during normal business hours. Residents may elect to apply by mail and have their sticker delivered for a \$1.00 processing and mailing fee (checks can be made payable to "Manchester Township").

The Clerk's Office will maintain the "No Knock" registry. Vendors must inspect the list and cannot approach any residence on the list, or face a fine of up to \$1,000, 90 days in prison, or 90 days community service. The registry will be provided to any licensee who is issued a license to conduct door to door sales pursuant to Manchester Township Code #301-21. It should

be noted that registration upon the "No Knock" Registry does not prohibit door to door solicitation by non-profit, charitable, religious or political organizations, as these types of solicitations are protected by the First Amendment. Forms are available from the Municipal Clerk's office or on our website.

Notary Services from the Municipal Clerk's office



Notary Services are provided free of charge to Manchester Township residents. We do not notarize the following documents: Wills, Trusts, and Power of Attorney.

Valid photo ID is required. If a witness is required, please note Municipal Clerk office staff cannot be utilized. Please bring your own witness(s).

Marriage and Civil Union

Appointments are required and should be in scheduled well in advance of the ceremony. Please contact the Registrar to schedule.

SCAM ALERT!!!

Scammers are pretending to be government employees. They may threaten you and may demand immediate payment to avoid arrest or other legal action. *Do not be fooled!*

If you received a suspicious call:

1. **HANG UP!**
2. **DO NOT GIVE THEM MONEY OR PERSONAL INFORMATION**
3. **REPORT THE SCAM AT [OIG.SSA.GOV](https://www.oig.ssa.gov)**



Office of the Inspector General
SOCIAL SECURITY ADMINISTRATION



MIGHTY YOUNG'S APPLIANCE

SALES - SERVICE - PARTS

MIGHTY YOUNG'S APPLIANCE HAS BEEN OFFERING APPLIANCE SALES & SERVICE FOR OVER 75 YEARS! STOP IN OR GIVE US A CALL TODAY!

528 New Friendship Rd.
Howell, NJ 07731
(732) 363-0466



Kathleen Pascocello

Cell: 732-330-9339
Office: 732-370-4664

kpascocello@gmail.com
www.kathypascocellorealtor.com



Setting the Standard in Real Estate Excellence

Bringing 23 years of expertise as a seasoned REALTOR Associate, I am dedicated to serving Ocean County's active adult community with distinction. Whether you're selling, buying, or building, trust in my comprehensive knowledge and specialized expertise to navigate every aspect of your real estate journey. Let's collaborate to position your property strategically for a successful sale or to find your ideal home in our vibrant communities.

[Kathy.pascocello.realtor](https://www.instagram.com/kathy.pascocello.realtor)

Ocean County Real Estate Expert - Kathy Pascocello

Weichert
REALTORS





TOMS RIVER
DERMATOLOGY
& SKIN CANCER CENTER



New patients
are always
welcome!

Our Doctors



**Santiago
Centurion, MD**
*Dermatologist,
Mohs Surgeon &
Dermatopathologist*



**Cristina
Centurion**
MSN, MP-C



**Cynthia
Gelnow**
PA-C

DERMATOLOGICAL SERVICES OFFERED

We Treat Adult And Pediatric Patients

Clinical Dermatology:

- Skin Cancer Screening
- Precancerous Lesions
- Sun Damage
- Acne
- Eczema
- Mole Removal
- Skin Infections
- Dermatitis

Skin Cancer Surgery:

- Mohs Micrographic Surgery
- Superficial Radiotherapy

Cosmetic Dermatology:

- Botox
- Juvederm Fillers
- Chemical Peels
- Hydrafacials

SKIN CANCER

The key to livesaving therapy is early detection and treatment

NJ Top Docs 2013-2024

America's Top Dermatologists

2019 Consumers' Research Council of America

*Specializing in Skin Cancer Removal, Mohs Surgery, General
and Cosmetic Dermatology for Adult and Pediatric Patients*

To Schedule An Appointment

CALL 732-679-6300

Text us at 732-574-5264

Visit our website at www.dermatologyassociatesnj.com

TOM'S RIVER DERMATOLOGY & SKIN CANCER CENTER

780 Route 37 W | Suite 100 | 1st Floor | Tom's River, NJ 08755

WE ACCEPT ALL MAJOR INSURANCES

OTHER LOCATIONS

3548 Rt 9 South
Old Bridge, NJ 08857

57 Schanck Road, Bldg C-7
Freehold, NJ 07727

440 Chestnut St, 1st Floor
Union, NJ 07083

9th Legislative Update

Amato, Rumpf & Myhre Provide Update on ANCHOR property tax relief program

Senator Carmen Amato, Assemblyman Brian Rumpf, and Assemblyman Gregory Myhre are pleased to share an important update about the ANCHOR property tax relief program. The New Jersey Department of Treasury announced that starting next week, the Division of Taxation will begin sending out confirmation letters to 1.5 million New Jerseyans who are eligible for this season's ANCHOR payments.

What to Expect This Season

The Division of Taxation will continue the streamlined application system that was implemented last season:

- The Division of Taxation will automatically file applications for most homeowners and renters who previously received ANCHOR benefits.
- Starting August 19, 1.5 million New Jerseyans will receive ANCHOR Benefit Confirmation Letters. These letters will notify recipients that their application will be filed automatically.
- If personal information in the letter (name, mailing address, banking information) has changed since the last ANCHOR payment, a new application must be filed.
- The deadline to update information or file a new application is September 15, 2024. To update information or apply, visit anchor.nj.gov.

Important Dates to Remember:

- **AUGUST 19, 2024:** Mailing of ANCHOR Benefit Confirmation Letters begins.
- **SEPTEMBER 15, 2024:** Deadline for those needing to update their information or file a new application.
- **NOVEMBER 30, 2024:** Final deadline to apply for this year's ANCHOR benefit.
- **NOVEMBER 2024:** Payments will be issued on a rolling basis.

For more information, visit anchor.nj.gov, or contact the ANCHOR hotline at (609) 826-4282 or 1-888-238-1233. In-person assistance is also available at Regional Information Centers.

LD9 Bill Would Raise Asset Limits For Certain Medicaid Programs Assisting Seniors Most In Need

Policy Initiative Based on Proposal by the Ocean County Office of Senior Services Advisory Council

Senator Carmen Amato, Jr., Assemblyman Brian Rumpf and Assemblyman Gregory Myhre have introduced companion legislation, S-3482 and A-4622, that would increase the resource threshold for certain non-Modified Adjusted Gross Income (MAGI) Medicaid eligibility groups.



The legislation would apply to applicants who are over 65 years of age or disabled, such as individuals eligible for nursing homes services; Medicare Shared Savings Programs; the Medically Needy pathway; and home and community-based services.

In doing so, this bill more closely aligns resource requirements under Medicaid for these populations with the current resource requirements for individuals under 65 years of age and without disabilities, also known as the MAGI eligibility group. Currently, pursuant to federal law, the MAGI eligibility group does not have a resource test to determine eligibility.

The 9th District Delegation's legislation was drafted at the request of the Ocean County Office of Senior Services Advisory Council.

Amato, Rumpf and Myhre made the following remarks;

"Seniors and disabled persons should not be required to spend down their limited assets to a few thousand dollars just to qualify for a program that is intended to assist the most vulnerable persons in our society.

"Differing assets limits for Medicaid programs causes confusion and creates bureaucratic obstacles preventing people from getting the assistance they need. As an example, an individual applying for the Medicaid Managed Long-Term Services and Supports is required to have resources of less than \$2,000, while an individual applying for a Medicare Savings Program can have resources up to \$9,090.

"Our legislation was drafted with the expertise of the Ocean County Office of Senior Services Advisory Council. We are deeply grateful to the Advisory Council for bringing this issue to our attention as part of the County's ongoing and effective efforts to raise the quality of life for seniors and disabled persons."

Under the Delegation's legislation, asset limits (resource standards) for non-MAGI eligibility groups would be set at the following:

1. For one person households, the resource standard would be \$40,000;
2. For two person households, the resource standard would be \$60,000; and
3. For households of three or more persons, the resource standard would be increased by \$20,000 for each additional person.

Amato, Rumpf & Myhre: Senior Freeze Checks Being Issued by the State

Senator Carmen Amato, Jr., Assemblyman Brian Rumpf and Assemblyman Gregory Myhre are alerting constituents that the New Jersey Division of Taxation has begun issuing Senior Freeze checks through the state's property tax reimbursement program.

continued on page 6

9th Legislative Update continued

According to the New Jersey Department of the Treasury, more than 125,000 state residents will be receiving reimbursement checks this year following the expansion of the program's eligibility requirements that allow more seniors to qualify.

The 9th Legislative Delegation issued the following statement:

"Property tax relief continues to be the leading issue for a large segment of our constituents, including seniors who want to be able to afford to stay in their homes. Throughout this year's state budget process, our Delegation remained firmly committed to fully funding property tax relief programs such as the Senior Freeze and the ANCHOR programs.

"Drastic school aid cuts imposed through the state's broken school funding formula will only make property tax relief programs more critical for the financial security of homeowners, especially seniors.

"Assisting seniors with filing for the Senior Freeze program remains a core aspect of our Delegation's constituent service outreach efforts. Whenever visiting senior communities in our legislative district, we and our staff distribute informational materials on the Senior Freeze and other state programs that will provide tax relief or other means of assistance to qualifying seniors.

"While the Senior Freeze eligibility requirements have been eased, we understand and share the frustration of many of our constituents who still do not qualify due to having moved and thus required to establish a new base year. Eligibility complications in the Senior Freeze program only strengthen the case for the state to approve and fully fund the proposed Stay NJ Property Tax Credit Program to provide property tax relief to our seniors."

Qualifying residents can apply for the Senior Freeze (Property Tax Reimbursement) at the following website: <https://www.njportal.com/taxation/ptr>.

Constituents of the 9th Legislative District who did **NOT** receive a 2022 Senior Freeze/Property Tax Reimbursement and would like an application packet mailed to them or who are seeking assistance with the application process can contact the Amato-Rumpf-Myhre state legislative district office at SenAmato@njleg.org.

Thank you for the opportunity to provide this legislative update as your 9th District Legislative Delegation and open line of communication with you.

As always, our Delegation is ready is to serve you! If you or a family member has an issue regarding State Government, please do not hesitate to contact us via email: SenAmato@njleg.org or via phone: 1-609-693-6700.

ADK will help you SELL your HOME for More...Faster!

Our experienced agents specialize in Adult Community sales and live in neighboring communities. ADK is a local, independent company that works hard to gain a better understanding of your individual NEEDS, provide you with better **ADVICE**, and help you set realistic **GOALS**.

At ADK we understand your needs & will meet your Expectations!

Get The Attention You Deserve & The Results You Want.....

Don't Delay Call ADK!

CALL FOR A COMPLIMENTARY MARKET ANALYSIS AND HOME STAGING CONSULTATION



JoAnn Petrizzo
Owner/Broker



2009-2022



2024

FIVE STAR PROFESSIONAL
Real Estate Agent



732-255-4433

1071 Rt 37 West & Bananier

Located in the Favorites OTB Shopping Center across from CVS

www.adkrealtynj.com



DISTRICT 9 LEGISLATORS CALL ON BIDEN TO REJECT MEALS ON WHEELS FUNDING CUTS

Today, Senator Carmen Amato, Jr., Assemblyman Brian E. Rumpf and Assemblyman Gregory E. Myhre sent a letter to President Biden to express their concerns about the potential for funding cuts to the Meals on Wheels program.

“To prevent senior citizens from falling to desperate situations, all efforts must be taken to prevent any funding cuts to a program which has a proven track record of providing nutritious meals to those in need,” the Delegation said in their letter.

Dear President Biden,

Our State Legislative Delegation is writing on behalf of all of our constituents to express our unalterable position to any potential federal funding cuts that would negatively impact the Meals on Wheels program, a lifeline for several thousands of senior citizens here in New Jersey who are in desperate need of the vital services this program provides.

The potential for funding cuts to the Meals on Wheels program has created fear of waiting lists. Suffice it to say, this is both alarming and wholly un-American especially when considering not only our nation’s considerable resources, but the amount of foreign aid provided to other countries. To prevent senior citizens from falling to desperate situations, all efforts must be taken to prevent any funding cuts to a program which has a proven track record of providing nutritious meals to those in need.

In closing, we appreciate your attention to our Delegation’s serious concerns which have been conveyed in representing the interests of our constituents.

Sincerely,

*Senator Carmen Amato, Jr.
Assemblyman Brian E. Rumpf
Assemblyman Gregory E. Myhre*

BUY LIKE A BUILDER®

ALL FLOORS

AMERICAN FLOORING


DIRECT

DESIGNER FLOORS - WHOLESALE PRICES

516 E. Bay Ave. Manahawkin 609 - 597 - 7551

www.AmericanCarpet1.com

Call for a Free Estimate LIC# 13VH00147400

Carmona ~ Bolen 

Home for Funerals, LLC

“Let Our Home Be Your Home”

VETERAN & FIRST RESPONDER DISCOUNTS OFFERED



Family Owned & Operated

Traditional Funerals

Cremations and Memorials

Please call us to inquire about our affordable cremation packages!

Two Convenient Locations To Serve You

Toms River  **Whiting** 

412 Main Street
Toms River, NJ 08753
(732) 349-1922

Michael J. Defonzo Jr.,
Manager
N.J. Lic #4075

66 Lacey Road
Whiting, NJ 08759
(732) 350-0003

www.carmonabolenfh.com

Code Enforcement

Our Division of Code Enforcement addresses our residents' concerns to protect property values and quality of life issues and helps to address the many complaints we receive each year. Our Township Code is designed to protect the health, safety and welfare of all Manchester residents.

HERE ARE SOME THINGS TO KNOW ABOUT OUR ENFORCEMENT DUTIES:

Complaints:

Complaints received by our office cannot be anonymous by regulation. All information provided by a complainant is confidential.

Overgrown Trees and Bushes:

Bushes within 10 feet of the roadway should be no higher than 30 inches above pavement. Trees should not be planted along the roadway to ensure full visibility in the "right-of-way" and at all intersections.

Maintaining Entire Property:

You are responsible to maintain your entire property including anything that infiltrates into the "right-of-way" area.

Ornamental Grass:

These types of grass are not immune to enforcement violations. A section of ornamental grass must appear intentional in a designated portion of the lawn.

Fence Disputes Between neighbors:

When two or more property owners disagree with one another over a fence/property line dispute, this becomes what is known as a "civil matter" that can lead to legal action. The fastest, easiest, and cheapest way to resolve a dispute is often to reach an agreement with your neighbor.

Farm Animals:

By ordinance, Pigs and hogs shall be prohibited in all zones. For all other farm animals, a minimum of two acres is required. Please contact Zoning and/or Code Enforcement to inquire which zone the use is permitted.



Bulk Pick-Up & Brush Pick-Up:

May be placed 48 hours before pick-up is scheduled to begin. Placing debris sooner may result in a violation notice being issued.

Temporary Dumpsters & Storage Pods:

These structures are only permitted on improved residential driveways and require prior zoning approval.

Shipping Containers "Sea Boxes":

These types of containers are not permitted on a residential property.

Trailers in Roadway:

Trailers must be attached to a vehicle while in roadway. Detached trailer in roadway may result in a violation and/or impound.

Home Identification Numbers:

For your safety and in the event of an emergency, address numbers are required and shall be a minimum of 4-inch in height and be clearly visible on the front of your house.

The Department of Inspections, Land Use & Planning

Whose Land is that anyway?

A right-of-way (ROW) is a section of land and/or legal area that is owned by the municipality at which the Township has right to access and perform work for certain purposes such as sidewalks, curbs, and trees. In New Jersey, ROWs are commonly along municipally owned streets, and they typically extend from the edge of the pavement to the front yard property line.

HERE ARE SOME THINGS TO KNOW ABOUT ROWS:

Property ownership:

The property adjacent to a ROW belongs to the property owner, not the municipality.

Maintenance:

The property owner is responsible for maintaining the sidewalk, curb, and tree on their property and within the said ROW.

Right-of-way easements:

These easements allow municipal employees or other entities such as a utility company to use a pathway or road on someone else's property. For example, a right-of-way utility easement might allow a neighbor to run a pipe under a property to get to their house.



Sight Triangle:

A "sight triangle" at an intersection refers to a triangular area at the corner of two roads where a driver should have an unobstructed view of approaching traffic and pedestrians ensuring they can safely enter the intersection. Although while the Municipality is primarily responsible for maintenance, the landowners bordering an intersection are responsible for maintaining

their trees, shrubs or other vegetation that could obstruct the sight triangle along their property.

New to Medicare?
Need to switch your plan?
Want to know what's new?



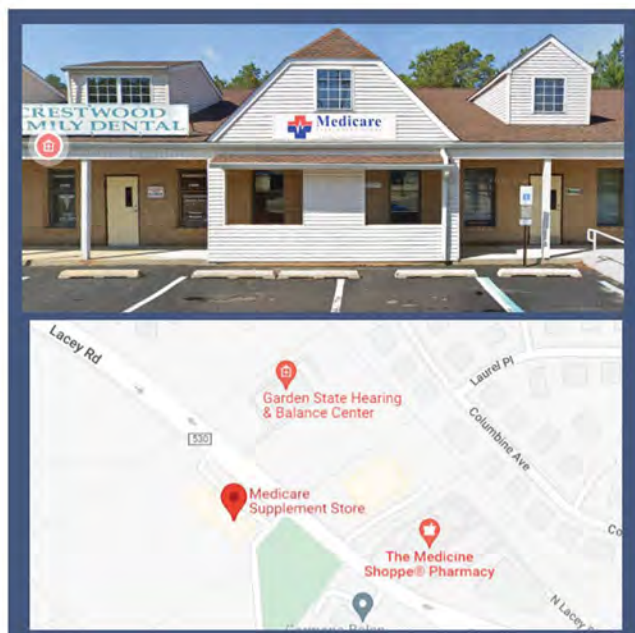
**Medicare
Supplement Store**

A Non-Government Agency



ASK US ABOUT PRESCRIPTION DISCOUNTS!

Visit our store to learn about the new 2025 Medicare Plans.



**70 Lacey Road, Suite 7
Whiting, NJ 08759**

**Open Monday - Friday
10:00 AM to 4:00 PM**

**CALL (732) 252-8828
to schedule an appointment.**

Walk-ins Welcome!

www.MedicareSuppStore.com

This is an advertisement for insurance. By responding to the ad, you will be put in contact with a licensed insurance agent offering Medicare Advantage Plans, Medicare Supplement Plans, and Prescription Drug Plans. Not affiliated with or endorsed by any government agency.

Street Trees vs. Private Trees

Manchester Township is mandated by our NJDEP Tier A MS4 Stormwater permit to adopt a “Tree Removal/Replacement ordinance. As such, we will be revising our current Tree Ordinance – § 403 – Trees to accommodate this regulation. This ordinance is to establish requirements for tree removal and replacement to reduce soil erosion and pollutant runoff, promote infiltration of rainwater into the soil and protect the environment, public health, safety and welfare.



we adopt must include that we enforce a community-wide ordinance that includes a removal and replacement element to control tree removal applicable to all types of properties, including private properties.

Street trees:

These trees are planted in public rights-of-way, such as sidewalks, and are typically owned and maintained by the Township. Street trees can help clean the air, reduce energy costs, and beautify neighborhoods. However, they can face challenges within our environment, such as limited space for growth, construction damage, and vandalism.

Private trees:

These trees are the responsibility of the property owner. Private trees can provide privacy, shade, and a lush green landscape. They can also help shield your property from wind and noise.

As stated by the NJDEP – “Trees play a critical, often overlooked, role in the water cycle and in the mitigation of stormwater runoff issues such as soil erosion, pollutant reduction, infiltration, quantity reduction, and thermal effects. This ordinance is intended to ensure that permittees are considering these undervalued assets in their stormwater management efforts.”

The main purpose of the Tree Ordinance is the preservation of trees wherever this can be accomplished. However, the ordinance

DOWNLOAD 511PA APP



Travel Info On The Go

-  Check Weather Forecast & Alerts
-  Check Winter Road Conditions
-  Check Plow Truck Status

www.511pa.com




OUR SERVICES

- ✔ CHHA
- ✔ Companion Care
- ✔ Personal Care
- ✔ 24-Hour Live-in Services
- ✔ Skilled Nursing
- ✔ Hospice Care
- ✔ Respite Care



Fastrack
HEALTH SERVICES
We Do Care

Live-In and Live- Out services offered throughout the state of New Jersey

Peace of Mind with Fastrack Health Services: Fastrack Health Services is a fully licensed, bonded, and insured agency. We employ our caregivers directly, ensuring they're covered by workers' compensation and professional liability insurance. We also conduct thorough criminal background checks for your peace of mind.



 Call Us: 732-860-9993
 Fax: 732-860-9994
 www.fastrackhs.com

 609-906-1179
 info@fastrackhs.com
 1617 Route 88, #205 Brick, NJ, 08724



THANK YOU TO THE BUSINESSES

The township would like to thank the businesses that appear in this newsletter and recognizes each of them as contributors to our community. Thanks to their advertising support, this newsletter has been produced at no charge to our residents.

MANCHESTER RECREATION PRESENTS



Christmas

In the Pines

JOIN US!

DECEMBER

7

2PM - 8PM



HARRY WRIGHT LAKE

{RAIN DATE: DEC 8TH}

FOOD VENDORS ~ CRAFT MARKET ~ PERFORMANCES ~
HOT COCOA ~ FIREPITS AND S'MORES
A SPECIAL VISIT FROM SANTA



Township Reassessment

As previously reported, the Ocean County Board of Taxation approved the township to conduct a Reassessment to be completed by tax year 2025. The Assessor's office conducted more than a dozen public meetings for residents to obtain information concerning the Reassessment process and to answer any related questions.

Reassessment is the process of appraising all real estate in a municipality according to its full market value, to ensure that each property owner pays their fair share of taxes. The process is revenue neutral, meaning the purpose is not to raise property taxes. The purpose of the reassessment is to bring the assessed value of all properties within the Township to 100% of market value and to ensure that the property tax assessments are fair and equitable. The last reassessment in the township was in 2020.

The inspections of the more than 17,000 homes and commercial properties have been completed. All properties were physically inspected, and outside building dimensions are noted to help insure the same standard of value. Recent sales in the market place, construction costs, and income & expense data for commercial properties are being analyzed as part of the valuation process. The market value for each property in the township will be determined as of October 1, 2024, as required by State Law. We have been closely monitoring changes in the real estate market and the changes will be reflected in the market value of each property. Each property owner will be sent a notice informing them of the new assessed value. The letters will be sent to each property owner during the months of December 2024 and January 2025. Due to the large number of properties the notices are being mailed over a two month period. All property owners will receive their notice by the end of January. Residents will be given the opportunity to arrange

for an informal review of the new assessments if necessary. A property owner planning to attend the review should be prepared to support any disagreement regarding the appraised value. For example, recent sales of similar or comparable properties are an indication of value. A recent purchase price of the property may also help to support a view as to value.

The impact of the new assessments will not affect the property owner's tax bill until July of 2025. The new tax rate for the 2025 tax year will be substantially reduced. That rate cannot be finalized until the new assessments are filed with the Ocean County Board of Taxation and operating budgets for schools, county and local government are fixed. Budgets are not completed until several months after filing the tax list. **You should not apply the 2024 tax rate to your new 2025 assessment.**

A reassessment does not necessarily mean an increase in taxes for every homeowner. The tax rate will go down significantly to compensate for the increase in the assessed values. Since not all properties have appreciated in value at the same rate, some tax bills will go up, some will stay the same and others will go down.

You can obtain additional information about the Reassessment process by accessing the Township's website at www.manchestertwp.com. The Township of Manchester would like to take this opportunity to thank the property owners of Manchester Township who provided their assistance and cooperation during the Reassessment process. If any resident should have a question or concern related to the reassessment, they should contact the Tax Assessor's office at 732-657-8121.

SEE WHAT MATTERS MOST

Experience top-tier eye care and cutting-edge services tailored to your individual needs from SightMD's New Jersey team of expert ophthalmologists.

CATARACT SURGERY **OPTOMETRY SERVICES** **GLAUCOMA TREATMENT** **COMPREHENSIVE OPHTHALMOLOGY**

550 County Rd 530 #19, Whiting, NJ 08759

SightMD New Jersey | (877) 296-4144

Ocean Cardiovascular Specialists

MURAT KARATEPE, MD, FACC
ASU RUSTEMLI, MD, FACC

Invasive and Noninvasive Cardiology
Board Certified in Cardiology & Nuclear Cardiology

Echocardiography | Carotid Ultrasound
Holter Monitoring | Stress Testing

25 Mule Road, Suite B2 | Toms River, NJ 08755
Tel: 732.505.9005 | Fax: 732.505.9919

www.oceancardiovascular.com

Manchester Township Police Department



One of the Manchester Township Police Department's top priorities remains to increase engagement with our community, forming enduring relationships between residents and our police officers. Transparency is crucial, as mutual trust leads to a strong bond with those we serve and helps our officers better perform their mission of public service.

To further that goal, Sgt. Joseph Fastige, social media manager for our department, recently launched a monthly Facebook Live broadcast, where he offers a monthly recap of happenings in Manchester Township, updates on police activity and initiatives, and hosts an interactive questions and answers session. It was only fitting that the August broadcast featured an interview with Chief of Police Antonio Ellis, who spoke about his tenure with the department, the responsibilities of his role as the agency's lead, and his vision for the department and our community.

"It's important that our officers are able to reach our residents through multiple avenues, whether that is in-person or online," said Chief Ellis. "Social media plays a significant role in most of our daily lives, so it made sense for Sgt. Fastige to utilize Facebook Live as yet another tool that we can use to keep our residents informed and engaged."



In the months to come, Sgt. Fastige plans to bring in additional guests, including officers from the Patrol Division, Traffic Safety Section, and Investigations Bureau. They'll have the opportunity to speak about topics such as what goes into being a Manchester Police officer, how our residents can stay safe on the roads, and how to identify and avoid common scams. We invite our residents to follow our Facebook page, @manchesterpolice, to stay informed of the next broadcast date and join in the comments section with their input and questions.

This Facebook Live broadcast builds upon the successful Coffee with a Cop and Pizza with Police events that our department regularly hosts at varied locations throughout Manchester Township. Additionally, our officers, public safety telecommunicators, and EMTs are present at the Manchester Day and National Night Out events; we host an annual summer Youth Academy; and a department representative may be found regularly at various community meetings including those held by the Manchester Coordinating Council.

These public events serve as invaluable bridges between law enforcement and the community, fostering crucial relationships and trust. They provide an informal setting where community members can engage with police officers, discuss concerns, and build mutual understanding. Community policing emphasizes collaborative efforts to address local issues, enhance safety, and prevent crime.

Follow our Manchester Police social media platforms and website for announcements regarding the next Facebook Live Stream, Coffee with a Cop, and Pizza with Police events:

-  Facebook: @manchesterpolice
-  Instagram: @manchesterpolicenj
-  Website: www.manchesterpolicenj.com

Applebee's
GRILL + BAR
MANCHESTER, NJ | 1055 Rt. 70 | 732.657.7676

\$10.99 LUNCH DEAL
MONDAY-FRIDAY 11AM-3PM
Choice of Lunch Entrée + Fountain Beverage

Dine-in only. Price does not include tax or gratuity. Only at Doherty Enterprises owned and operated Applebee's locations in NJ and NY (Long Island). Subject to change.

RENOVATE YOUR BATHROOM IN AS LITTLE AS 1 DAY!

 **732-812-0843**

WHY US?

- 4.7 Google Rating
- Local Experts In Ocean County
- Certified Contractors
- Free Design Consultation
- Over 100 Design Options

NO PAYMENTS
UNTIL 2026

HASSLE FREE

FINANCING
AVAILABLE



SCAN ME



BATHROOMPROSNJ.COM

367 Brick Blvd,
Brick Township
Drum Point Plaza

BATHROOM|PROS

HIC# 13VH10142100

1545 Route 37,
Toms River NJ

MANCHESTER RECREATION 2024—25 Events



Monday, November 11th

VETERANS DAY

Manchester Town Hall

11am

Saturday, December 7th
CHRISTMAS IN THE PINES

Harry Wright Lake

2pm - 8pm



Week of December 16th

*HOLIDAY HOME
DECORATING CONTEST*

Register Online

Sunday, April 13th
EASTER EGG HUNT

Manchester Town Hall

10am

Register Online



*The Fall/Winter Recreation Brochure is now available on our website.
Registration is now open for all programs.*

Register at: <https://parksrec.egov.basgov.com/manchesternj>

@ ManchesterNJRecreation for all our upcoming event info
Or visit our website at: manchestertwp.com

DEPARTMENT OF PUBLIC WORKS

PLEASE NOTE RULES

**NO MORE THAN 8 CUBIC YARDS OF BULK WASTE ITEMS WILL BE COLLECTED FROM ANY SINGLE RESIDENCE DURING ANY ONE SCHEDULED COLLECTION.
-APPROXIMATELY 5-FEET WIDE BY 4-FEET HIGH BY 10-FEET LONG-**



BULK PICK-UP: Large items such as furniture, doors, cabinets, mattresses and other large items will be picked up on your scheduled date. Windows, mirrors and other pane glass must be TAPED before they are put out for pick-up, or they will not be picked up. Broken pane glass (not bottles) must be placed in a separate reusable, not cardboard, container marked "Broken Glass." Please stack computers, TVs, stereos, DVDs & video players, etc. (all electronics with cords) separately curbside. As of January 2011, these items are banned from the landfill and must be recycled. These items can also be brought to the Whiting Recycling Center.

LEAF PICK-UP: Leaves and pine needles must be raked to the curb in a single row, no earlier than 2 days prior to the scheduled pick up. Leaves will be vacuumed up utilizing large equipment and a clear path is required. All vehicles should be parked away from leaf rows to expedite the process. Leaves mixed with any brush or debris will not be picked up. Brush and garden waste, clippings and other vegetative waste must be placed in a separate container. Branches must be tied into manageable bundles, less than 4-ft. long and under 50 lbs., with a max. branch diameter of 3-inches. Loose & unmanageable branches and waste will not be picked up.

WHITE GOODS/APPLIANCES & METAL ITEMS: Large household appliances such as washers, dryers, refrigerators, stoves & dishwashers as well as lawnmowers, bicycles & other large metal items, or items containing a significant amount of metal will be picked up on your Bulk Pick-Up dates. USEPA regulations require that freon be removed from such appliances as refrigerators, air conditioners & freezers before pick-up & disposal. Residents must contact a certified contractor to remove the freon from the appliance. A Certificate of Freon Removal must be placed on the unit before it can be picked up.

CONSTRUCTION DEBRIS/BUILDING MATERIALS: Drywall, shingles, plaster, untreated railroad ties, plywood, lumber, paneling, insulation, siding & porcelain fixtures will not be picked up at your home. It is requested that residents use a Private Container Service for home renovations. Small amounts of debris may be taken to the Whiting Recycling Center. Disposal of any debris generated by a building contractor is the sole responsibility of the contractor. Residents who are contractors CANNOT place their business waste & debris curbside during Bulk Pick-Up, nor can they bring it to the Whiting Recycling Center.

TIRES, HAZARDOUS WASTE: (Anti-Freeze, Paint, Thinners, Solvents, Chemicals, Asbestos, Household Cleaners, etc.) concrete, tree stumps, grass clippings, rocks and large branches will not be picked up and are not accepted at the Whiting Recycling Center. For disposal of these items, contact the OCEAN COUNTY NORTHERN RECYCLING CENTER at 732-367-0802. Automobile batteries may be taken to the Whiting Recycling Center.

USED MOTOR OIL will not be picked up. It should be taken to the Whiting Recycling Center on Rt. 70 in Whiting as long as the oil does not contain gas, water or antifreeze. Motor oil must be checked in by an employee.

BRUSH & GARDEN WASTE will be picked up on your scheduled Leaf & Brush Pick-Up Dates. No logs, stumps, grass clippings, bushes or trees with roots or debris from land clearing will be picked up.

CARPETING will be picked up provided it is cut up in 4-foot lengths, rolled and tied, and weighing not more than 50 pounds. Wet carpeting will not be picked up, it is the resident's responsibility to make sure that carpeting is not put out in the rain.

MOTORIZED VEHICLES such as dirt bikes, jet skis, scooters, boat motors & boats of any type will not be picked up and will not be accepted at the Whiting Recycling Center.

PROPANE TANKS will not be picked up and are not accepted at the Whiting Recycling Center.

STICKERS can be obtained at Town Hall, Room 103 or at the Public Works Garage on Rte. 70 in Whiting, by providing driver's license & vehicle registration showing a Manchester address. (New residents need to provide proof of residency such as a phone, cable, electric or gas bill. We DO NOT accept water or tax bills)

Residents of Manchester Township are permitted to bring household waste to the Ocean County Landfill on Rte. 70. Household waste, recyclables & bulk can be brought to the Whiting Recycling Center, provided you have a Township issued sticker on your vehicle. Stickers are issued only to people who reside in the Township. Landfill permits are not issued to landlords or property owners who do not reside in Manchester Township. Landfill permits will not be issued for commercial vehicles. Upon entry to the recycling center in Whiting, a valid Manchester driver's license must be presented to the booth attendant.

For more information, contact the Department of Public Works 732-657-8121 x3300



If there's any delay, it's you we pay!®



Ben Franklin Plumbing, One Hour Heating & Air, and Mister Sparky Electric

Is your local 'one stop shop' for ALL of your home service needs.
One call takes care of it all!



From Plumbing, HVAC, Repairs, Installations, Maintenance, Electric, Remodels & More, you can depend on our family of home services to do the job RIGHT. Local, family owned, and backed by trusted national brands – we treat every family and home, as we do our own.

Call or visit us 24/7 at

732-341-4666/www.benfranklinplumbingoc.com

732-349-7997/www.onehourheatandairoc.com

(732) 204-8120/<https://www.mistersparky.com/ocean-county/>

Ben Franklin Lic #36BI009918 One Hour Lic #19HC004518 Mister Sparky Lic #34EB00529200

#1 SINGLE OFFICE FOR WHITING

Crossroads Realty Whiting lists and sells more homes in our community than any other company or franchise.

Rank	Name	Sides	Volume	Average	% Total Number	\$ Total Volume
1.	Crossroads Realty Inc-WH (1716)	100.0	12,676,258	126,763	11.66	8.55
2.	Weichert Relators-Toms River (660)	62.0	10,926,799	176,239	7.23	7.37
3.	RE/MAX at Barnegat Bay (1420)	40.5	6,046,300	149,291	4.72	4.08
4.	Crossroads Realty Executive Office (1204)	26.0	4,662,000	179,308	3.03	3.14
5.	Buonomo Realty, LLC (2605)	20.0	2,979,099	148,955	2.33	2.01

Our agents offer the most honest, ethical and professional customer service. Thank you for your confidence over all the years. Call us with any real estate questions, we are here for you and our door is always open!



Lori Woytanowski
Broker/Manager
732-874-0764



Noreen Lynch
Realtor® Associate
732-267-2336



Carole Kuiken
Broker Salesperson
732-232-1402



Karen Naedele
Realtor® Associate
973-464-1052



Vincent Maldonado
Realtor® Associate
609-290-6330



Crystle Skinner
Realtor® Associate
732-581-8441



Gerard Fiore
Realtor® Associate
732-966-4197



Elizabeth Kohr
Realtor® Associate
717-269-6720



Susan Kuiken
Realtor® Associate
732-779-7000



732-350-1000
or stop in at 480 Route 530!



460 Route 530 Whiting, NJ • www.CrossroadsRealtyNJ.com

2025 MANCHESTER TOWNSHIP RECYCLING SCHEDULE

DATES IN BOLD & UNDERLINED ARE SATURDAYS DUE TO HOLIDAY ON REGULAR DAY

REGARDLESS OF WEATHER CONDITIONS ALL RECYCLING MUST BE PLACED CURBSIDE THE NIGHT BEFORE YOUR PICKUP DATE

SINGLE STREAM RECYCLING:

ALL RECYCLABLE MATERIALS ARE COMBINED IN A REUSABLE CONTAINER NO LARGER THEN 32 GALLONS. DO NOT SORT, DO NOT TIE OR BUNDLE CARDBOARD & NEWSPAPER. DO NOT USE PLASTIC BAGS.



SINGLE STREAM
recycling

ACCEPTABLE RECYCLABLE MATERIALS:

NEWSPAPER, MIXED PAPER & BROWN CORRUGATED CARDBOARD, CHIPBOARD, JUNK MAIL, MAGAZINES, USED WRITING PAPER, WHITE ENVELOPES, COMPUTER PAPER & CATALOGS.

COMMINGLED BOTTLES, CANS & PLASTICS; PLASTIC BOTTLES, STEEL & ALUMINUM CANS, ALUMINUM FOIL, FOOD CONTAINERS & GLASS BOTTLES. LEAVE CAPS/LIDS ON.

**Note - Only Recycle Plastic Materials With The Recycling 1, 2 Or 5 Symbol On The Bottom Of Container. See Examples at right*



NON-ACCEPTABLE RECYCLABLE MATERIALS:

PLASTIC BAGS (SHOPPING BAGS, FOOD STORAGE BAGS, ETC.), PLASTIC BOWLS, PLANT CONTAINERS, PACKAGING MATERIAL, MEDICAL WASTE, DISHES, GLASSES, HOUSEHOLD BATTERIES, POTS & PANS.

TELEPHONE BOOKS WILL NOT BE PICKED UP WITH YOUR RECYCLING. YOU MAY DISPOSE OF THEM AT THE WHITING RECYCLING CENTER LOCATED OFF ROUTE 70 AT SAM PITTS ROAD.

NO SHREDDED PAPER, YOGURT, STYROFOAM.

Do Not Dispose Of Syringes & Needles In Recycling Containers Or In Recyclable Bottles & Cans

MANCHESTER RECYCLES – IT'S THE LAW!

**Recycling Services
Provided by Interstate
Waste 609-771-8005**

2025 MANCHESTER TOWNSHIP RECYCLING SCHEDULE

MONDAY:

Roosevelt City, Fox Hollow, Beckerville, Timber Green, Crestwood 6, Reserve @ Lake Ridge

Jan. 13-27, Feb. 10-24, Mar. 10-24, Apr. 7-21, May 5-19, June 2-16-30, July 14-28, Aug. 11-25, Sept. 8-22, Oct. 6-20, Nov. 3-17, Dec. 1-15-29

TUESDAY:

Pine Ridge & Pine Ridge South, Country Walk

Jan. 14-28, Feb. 11-25, Mar. 11-25, Apr. 8-22, May 6-20, June 3-17, July 1-15-29, Aug. 12-26, Sept. 9-23, Oct. 7-21, Nov. 4-18, Dec. 2-16-30

WEDNESDAY:

Homes on Rt. 571 - north of Rt. 70 to Jackson border—Rolling Meadows, Ridgeway Mobile Park, Renaissance, Ridgeway Acres, River Pointe, Cedar Glen West, Wilbur Ave, Holly Oaks, Clearstream Estates, Autumn Ridge Townhomes, Brentwood

Jan. 4-15-29, Feb. 12-26, Mar. 12-26, Apr. 9-23, May 7-21, June 4-18, July 2-16-30, Aug. 13-27, Sept. 10-24, Oct. 8-22, Nov. 5-19, Dec. 3-17-31

THURSDAY:

Cedar Glen Lakes, Village Green, Old Whiting, Meadows, Pasadena, The Woods, Woodlands

Jan. 2-16-30, Feb. 13-27, Mar. 13-27, Apr. 10-24, May 8-22, June 5-19, July 3-17-31, Aug. 14-28, Sept. 11-25, Oct. 9-23, Nov. 6-20, Dec. 4-18

FRIDAY

Crestwood Villages 4 & 5, Schoolhouse Road

Jan. 3-17-31, Feb. 14-28, Mar. 14-28, Apr. 11-25, May 9-23, June 6-20, **July 5-18**, Aug. 1-15-29, Sept. 12-26, Oct. 10-24, Nov. 7-21, Dec. 5-19

MONDAY:

Pine Lake Park-East, Southampton to Route 571, Leisure Knoll

Jan. 6-20, Feb. 3-17, Mar. 3-17-31, Apr. 14-28, **May 12-31**, June 9-23, July 7-21, Aug. 4-18, **Sept. 6-15-29**, Oct. 13-27, Nov. 10-24, Dec. 8-22

Recycling Schedule continued on page 20

2025 MANCHESTER TOWNSHIP RECYCLING SCHEDULE

TUESDAY:

Pine Lake Park-West of Southampton, Savannah Acres, Pine Acres Manor, Ridge Creek, Summit Park, Commonwealth Woods, Karen Court

Jan. 7-21, Feb. 4-18, Mar. 4-18, Apr. 1-15-29, May 13-27, June 10-24, July 8-22, Aug. 5-19, Sept. 2-16-30, Oct. 14-28, Nov. 11-25, Dec. 9-23

WEDNESDAY:

Leisure Village West, homes on Rt. 571 - south of Rt. 70 to Toms River border—Leisure Ridge, Oak Knoll, Cedar Glen Homes, Richard Estates, Whitney Estates

Jan. 8-22, Feb. 5-19, Mar. 5-19, Apr. 2-16-30, May 14-28, June 11-25, July 9-23, Aug. 6-20, Sept. 3-17, Oct. 1-15-29, Nov. 12-26, Dec. 10-24

THURSDAY:

Crestwood Villages 2 & 3

Jan. 9-23, Feb. 6-20, Mar. 6-20, Apr. 3-17, May 1-15-29, June 12-26, July 10-24, Aug. 7-21, Sept. 4-18, Oct. 2-16-30, **Nov. 13-29, Dec. 11-27**

FRIDAY:

Crestwood Villages 1 & 7, Whiting Station

Jan. 10-24, Feb. 7-21, Mar. 7-21, Apr. 4-18, May 2-16-30, June 13-27, July 11-25, Aug. 8-22, Sept. 5-19, Oct. 3-17-31, Nov. 14-28, Dec. 12-26

2025 MANCHESTER BULK & LEAF PICK-UP SCHEDULE

NO MORE THAN 8 CUBIC YARDS OF BULK WASTE ITEMS WILL BE COLLECTED FROM ANY SINGLE RESIDENCE DURING ANY ONE SCHEDULED COLLECTION.
APPROXIMATELY 5-FEET WIDE BY 4-FEET HIGH BY 10-FEET LONG-

ZONE 1 & RESERVE @ LAKE RIDGE

ALL OF WHITING, BEGINNING AT THE BORDER OF LAKEHURST, WEST OF RTE 70, ALL OF BECKERVILLE, ROOSEVELT CITY, FOX HOLLOW, TIMBER GREEN, WOODS @ WHITING, THE PASADENA AREA & WOODLANDS

BULK PICK-UP DATES

FEB 6 & AUG 28

LEAF & BRUSH PICK-UP DATES

APR 22 & NOV 13

ZONE 2A & RIVER POINTE

WHITNEY, RICHARD & CLEARSTREAM ESTATES, RIDGEWAY ACRES, QUARRY RD, RIDGEWAY BLVD, SINGLE FAMILY HOMES-RIDGEWAY AREA, RIDGEWAY MOBILE HOME PARK, ROLLING MEADOWS, JOHNSON, RICHMOND & WASHINGTON AVES.

AUTUMN RIDGE & BRENTWOOD

BULK PICK-UP DATES

FEB 11 & SEPT 2

LEAF & BRUSH PICK-UP DATES

APR 24 & NOV 18

ZONE 2B

HOLLY OAKS & WILBUR AVENUE

BULK PICK-UP DATES

FEB 18 & SEPT 9

LEAF & BRUSH PICK-UP DATES

MAY 8 & DEC 4

LEISURE VILLAGE WEST

BULK PICK-UP DATES

FEB 27 & SEPT 18

ZONE 3A

ALL SINGLE FAMILY HOMES ON OR OFF RTE 571 FROM RTE 527, UP TO MAPLEWOOD & FAIRFIELD ST INCLUDES ALBERTA, LOCKHART, SEMINOLE, MIDWAY, LAKE, WELLINGTON PL. & LAWRENCE PL OAK KNOLL & RIVERWOOD CT.

BULK PICK-UP DATES

FEB 13 & SEPT 4

LEAF & BRUSH PICK-UP DATES

APR 29 & NOV 20

ZONE 3B

ALL SINGLE FAMILY HOMES IN SA- VANNAH ACRES AND SUMMIT PARK INCLUDING ALL SINGLE FAMILY HOMES ON ROUTE 37, RIDGECREEK, PINE ACRES MANOR, COMMONWEALTH WOODS & KAREN CT.

BULK PICK-UP DATES

FEB 20 & SEPT 11

LEAF & BRUSH PICK-UP DATES

MAY 13 & DEC 9

ZONE 4A

PINE LAKE PARK, 1ST AVE. TO THE SOUTH SIDE OF COMMONWEALTH, GLADSTONE THRU MANCHESTER ST. INCLUDING ALL DEAD-END STREETS OFF MANCHESTER ST.

BULK PICK-UP DATES

MAR 10 & SEPT 30

LEAF & BRUSH PICK-UP DATES

MAY 22 & DEC 18

Bulk & Leaf Pick-Up Schedule continued on page 22



Beacon of LIFE

The independence you want. The care you need.

PACE services

-  Primary Care
-  Social services
-  Nutritional guidance
-  Physical & Occupational Therapy
-  Home & personal care services
-  Social Center
-  Dental & vision
-  Transportation

ACCEPTS MEDICAID

Enrollment is voluntary and you may disenroll at any time




Scan here


YOU CAN JOIN IF YOU MEET THE FOLLOWING CRITERIA:

- ✓ You are 55+
- ✓ You live in Ocean or Monmouth county
- ✓ You need assistance with basic care needs
- ✓ You are able to live safely in the community with the help of PACE services

 **888-252 3226**

BeaconPace.com
info@Beaconpace.com

 1075 Stephenson Ave.
Oceanport, NJ 07757

 800 Route 70,
Lakehurst, NJ 08733

2025 MANCHESTER BULK & LEAF PICK-UP SCHEDULE

NO MORE THAN 8 CUBIC YARDS OF BULK WASTE ITEMS WILL BE COLLECTED FROM ANY SINGLE RESIDENCE DURING ANY ONE SCHEDULED COLLECTION.
APPROXIMATELY 5-FEET WIDE BY 4-FEET HIGH BY 10-FEET LONG-

<p>ZONE 4B NORTH SIDE OF COMMONWEALTH BLVD TO RIVERSIDE & ALL DEAD-END STS. OFF MANCHESTER ST. <u>BULK PICK-UP DATES</u> MAR 13 & OCT 6 <u>LEAF & BRUSH PICK-UP DATES</u> MAY 27 & DEC 22</p>	<p>CRESTWOOD VILLAGE 1 <u>BULK PICK-UP DATES</u> JAN 2 & JULY 24 <u>LEAF & BRUSH PICK-UP DATES</u> MAR 18 & OCT 9</p>	<p>CRESTWOOD VILLAGE 2 <u>BULK PICK-UP DATES</u> JAN 7 & JULY 29 <u>LEAF & BRUSH PICK-UP DATES</u> MAR 20 & OCT 14</p>
<p>CRESTWOOD VILLAGE 3 <u>BULK PICK-UP DATES</u> JAN 9 & JULY 31 <u>LEAF & BRUSH PICK-UP DATES</u> MAR 25 & OCT 16</p>	<p>CRESTWOOD VILLAGE 4 <u>BULK PICK-UP DATES</u> JAN 14 & AUG 5 <u>LEAF & BRUSH PICK-UP DATES</u> MAR 27 & OCT 21</p>	<p>CRESTWOOD VILLAGE 5 <u>BULK PICK-UP DATES</u> JAN 16 & AUG 7 <u>LEAF & BRUSH PICK-UP DATES</u> APR 1 & OCT 23</p>
<p>CRESTWOOD VILLAGE 6 <u>BULK PICK-UP DATES</u> JAN 21 & AUG 12 <u>LEAF & BRUSH PICK-UP DATES</u> APR 3 & OCT 28</p>	<p>CRESTWOOD VILLAGE 7 <u>BULK PICK-UP DATES</u> JAN 23 & AUG 14 <u>LEAF & BRUSH PICK-UP DATES</u> APR 8 & OCT 30</p>	<p>CEDAR GLEN HOMES & RENAISSANCE <u>BULK PICK-UP DATES</u> MAR 4 & SEPT 23 <u>LEAF & BRUSH PICK-UP DATES</u> MAY 15 & DEC 11</p>
<p>CEDAR GLEN WEST <u>BULK PICK-UP DATE</u> FEB 25 & SEPT 16 <u>LEAF & BRUSH PICK-UP DATES</u> MAY 6 & DEC 2</p>	<p>CEDAR GLEN LAKES <u>BULK PICK-UP DATES</u> JAN 30 & AUG 21 <u>LEAF & BRUSH PICK-UP DATES</u> APR 14 & NOV 6</p>	<p>PINE RIDGE & PR SOUTH <u>BULK PICK-UP DATES</u> FEB 4 & AUG 26 <u>LEAF & BRUSH PICK-UP DATES</u> APR 16 & NOV 10</p>
<p>WHITING STATION, THE MEADOWS & COUNTRY WALK <u>BULK PICK-UP DATES</u> JAN 28 & AUG 19 <u>LEAF & BRUSH PICK-UP DATES</u> APR 10 & NOV 4</p>	<p>LEISURE RIDGE <u>BULK PICK-UP DATES</u> FEB 25 & SEPT 16 <u>LEAF & BRUSH PICK-UP DATES</u> MAY 1 & NOV 24</p>	<p>LEISURE KNOLL <u>BULK PICK-UP DATES</u> MAR 6 & SEPT 25 <u>LEAF & BRUSH PICK-UP DATES</u> MAY 20 & DEC 16</p>

**BULK ITEMS MAY BE PUT ON DATE PICK-UP NO EARLIER THAN 2-DAYS BEFORE YOUR SCHEDULED PICK-UP DATE & MUST BE CURBSIDE NO LATER THAN 6:30AM ON THIS DATE.
ONCE YOUR HOME HAS BEEN PASSED, THERE WILL BE NO RETURN FOR PICK-UPS.**

The Township will provide a **SPECIAL PICK-UP of BULK ITEMS** for the Death of a Homeowner, or if a resident is moving out of the Township. We do not provide a move “in” pickup service. Special bulk pick-ups must be requested **IN PERSON** by resident or family member only at the Public Works office in Town Hall. Families cannot be represented by a realtor. Proof of Residency must be provided along with a Death Certificate, Contract of Sale or Lease Agreement as conditions require. Realtors, landlords and rubbish removal contractors **will not** be permitted to apply for special pick-ups.



*Make Your
Retirement
Dreams
Come True*



Say hello to an engaged lifestyle filled with strong social connections, stimulating activities, convenience, and comfort! Explore our dynamic community, where dedicated staff and outstanding services await. Enjoy favorite hobbies with friends, delicious dining experiences, captivating arts and cultural events, stimulating classes, and beautiful views at every turn. Our private apartments include all of the comforts and conveniences of a modern home with plenty of room to relax or entertain.

Discover our senior living lifestyle and picture yourself here.

**SIMPLY A WONDERFUL PLACE TO CALL HOME.
CALL TODAY 877-490-2160**



CRESTWOOD MANOR

A SPRINGPOINT COMMUNITY

50 Lacey Road, Whiting, NJ 08759

A Life Plan Community • crestwoodmanoronline.org



Manchester Township
1 Colonial Drive
Manchester, NJ 08759
732-657-8121

Presort Standard
U.S. Postage
PAID
Permit No. 550
Lehigh Valley, PA



Fall-Winter 2024-25



This Community Newsletter is produced for
Manchester Township by **Hometown Press**
215.257.1500 • All rights reserved®

To Place An Ad Call Elizabeth Konopacki at 609-209-2277

Law offices



**Taff, Davies
& Kalwinsky, LLC**

JOEL A. DAVIES - MATTHEW K. KALWINSKY
ROBERT H. TAFF (of counsel) - ZOE M. YAFFE

Serving our clients with dedication, competence and compassion.

143 Route 70 | Toms River, NJ 08755 | 732-901-5797 | fax 732-901-5799

National Academy of Elder Law Attorneys | House Calls Upon Request

www.taffanddavies.com

Joel Davies proudly served as Governor Christie's appointee on the
"New Jersey Task Force on Abuse of Persons who are Elderly or Disabled"

WILLS ESTATES TRUSTS REAL ESTATE GUARDIANSHIPS ESTATE LITIGATION

The information contained in *The Manchester Citizen* can also be accessed on our website at www.ManchesterTwp.com.